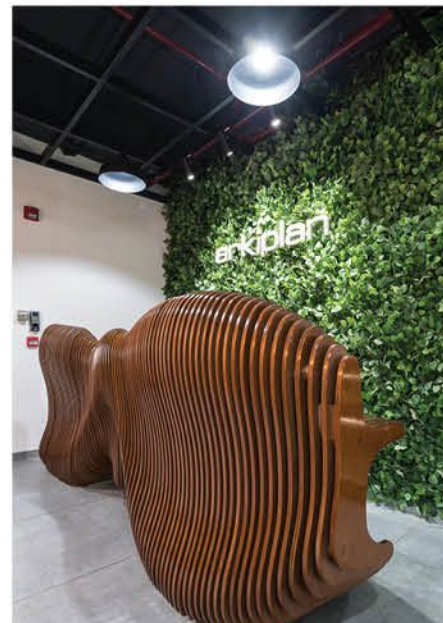


30 BEST **OFFICE INTERIORS** E-BOOK

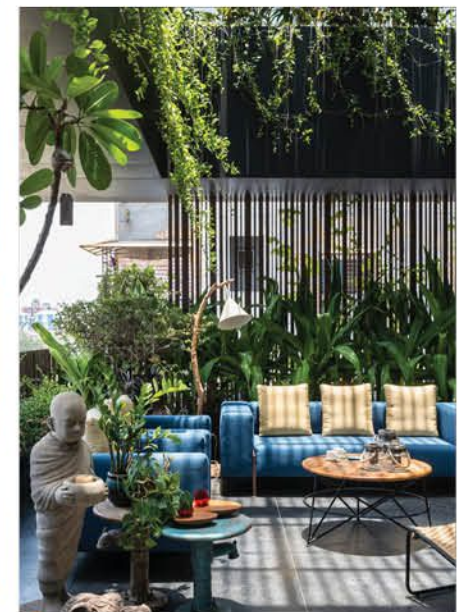
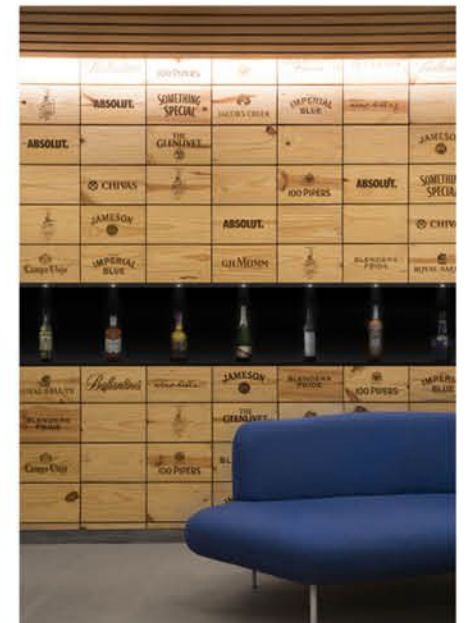
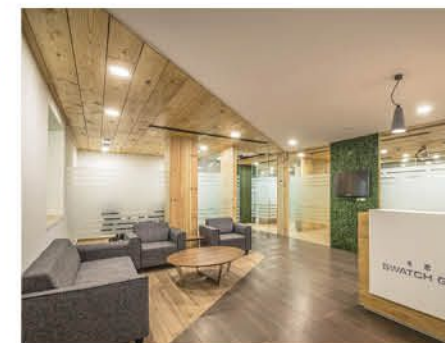
INDIA'S BEST OFFICE DESIGN PROJECTS
SMALL.MEDIUM.LARGE



SMALL



MEDIUM



LARGE



SMALL OFFICES

INCREATION ASSOCIATES- [pg.6](#)

PORTICO DESIGN CONCEPTS- [pg.10](#)

SAV ARCHITECTURE + DESIGN- [pg.16](#)

ARKIPLAN INTERNATIONAL-[pg.22](#)

ADHWA.ARCHITECTURE.INTERIORS-[pg.28](#)

HIRAL JOBALIA-[pg.34](#)

LIMITED EDITION DESIGN STUDIO -[pg.38](#)

DE: TALES DESIGN STUDIO-[pg.46](#)

THE INTERIOR WORKSHOP-[pg.52](#)

BRICKWOOD419 DESIGN STUDIO-[pg.56](#)

STUDIO ARDETE-[pg.60](#)

MEDIUM OFFICES

NEOGENESIS+STUDIO261- [PG.66](#)

ARCHRYSALIS- [PG.76](#)

ADDA ARCHITECTS-[PG.80](#)

THE BLUE LEAVES DESIGN GROUP-[PG.84](#)

ULTRACONFIDENTIEL DESIGN- [PG.88](#)

STUDIO LAGOM- [PG.96](#)

LARGE OFFICES

RC ARCHITECTURE - [PG.116](#)

M MOSER ASSOCIATES- [PG.122](#)

ULTRACONFIDENTIEL DESIGN- [PG.128](#)

ZYETA STUDIOS- [PG.132](#)

DSP DESIGN ASSOCIATES- [PG.136](#)

GEODESIGNS- [PG.142](#)

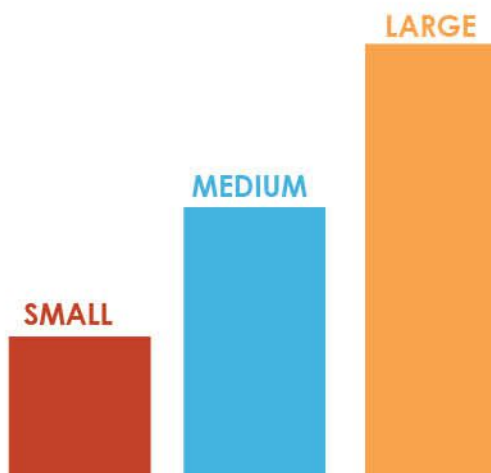
ULTRACONFIDENTIEL DESIGN- [PG.148](#)

DSP DESIGN ASSOCIATES- [PG.156](#)

AIRBNB ENVIRONMENTS, SPACE MATRIX- [PG.160](#)

M MOSER ASSOCIATES- [PG.168](#)

SPACE MATRIX- [PG.174](#)



30 Best Office Interior design is a collection of amazing office designs around the country, with this E-Book we believe to provide design inspiration to the readers Also, well-curated designs from the most innovative and established design firms.

Each of the projects is carefully selected on the based on the Design standards & space defining factors. Also, the theme of the project and functional fundamentals are considered with their uniqueness.

TERRACE GARDEN OFFICE

ADDA ARCHITECTS+URBANDESIGNERS

ORIANA FACADE OFFICE

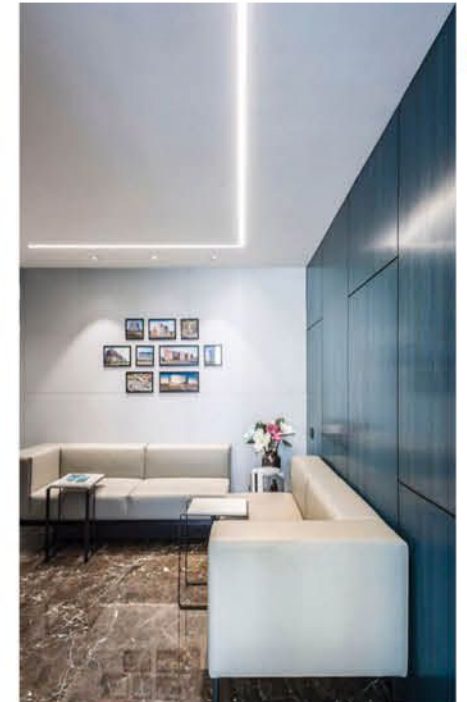
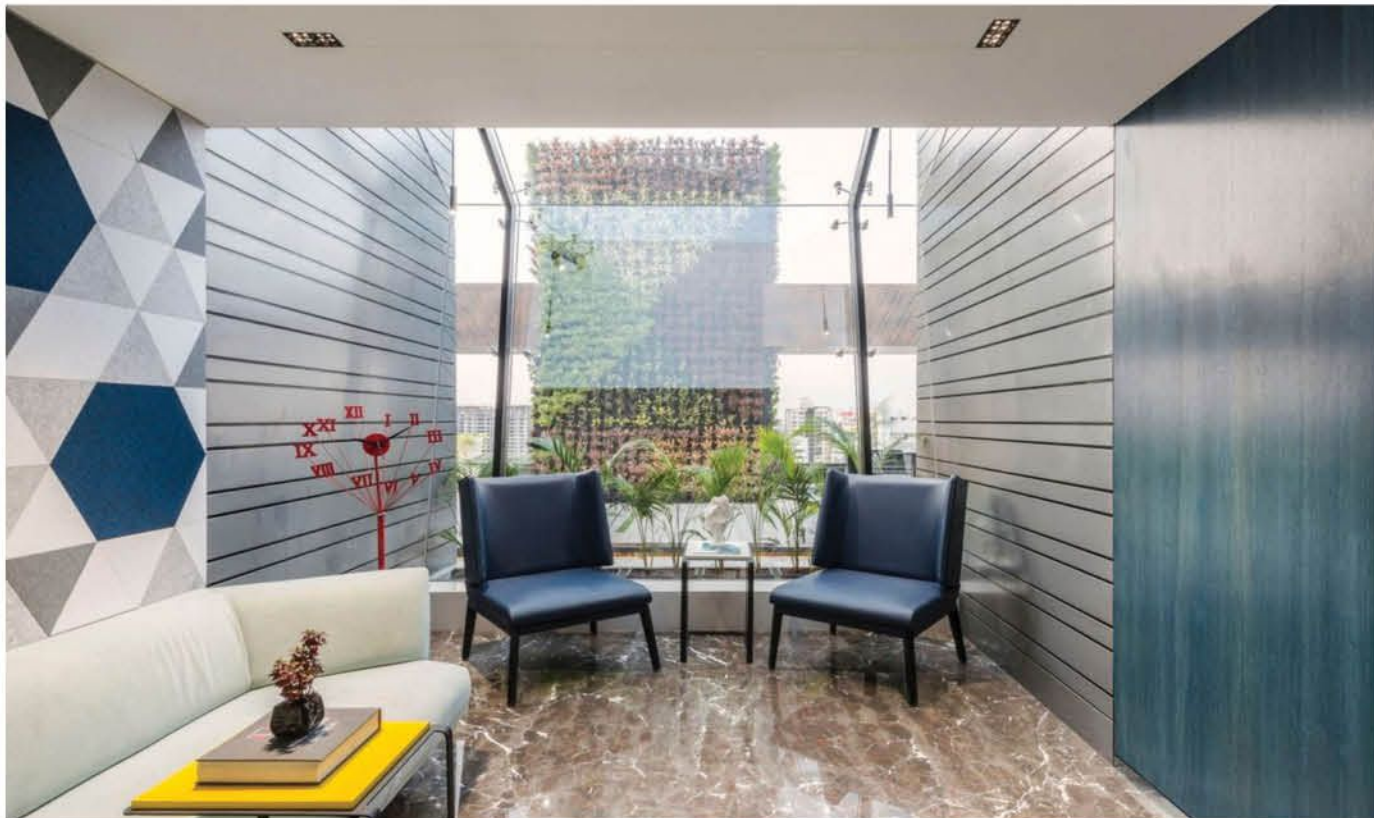
Firm : Adda Architects | **Client** : Oriana Facade | **Project size** : 4,000 sq.ft. |

Location : Surat | **Industry** : Consulting / Business Services, Design

Photography : ©Photographix | Sebastian + Ira

ADDA Architects & Urban Designers designed the offices for Oriana Facade, a design firm which emphasizes in delivering the most qualitative fabrication in the field of fabrication and architecture, located in Surat, India.

The office's main terrace façade is separated into geometric grid of glass partitions set with the spider hinges. The glass façade gives the view of all the separated areas while keeping it one and symmetric at the same time.



The use of different materials on the exterior such zinc, stone, green wall, & funder max to create a different look on the terrace garden sitting space.

Each glass façade is angled to optimize the level of shape provided, while allowing the direct natural light to illuminate the office floors and walls. The exterior being on the north direction, the natural daylight is soft and gives the soothing city view from the staff area and open terrace.

The working experience is designed to be gentle, dark, quiet and sophisticated with its hierarchy of volumes and spatial textures. Zinc, B.P.G, dark blue veneer, Italian and green wall choreographed to manufacture shadows and intrigue.

Design Team:

Mayank Parekh, Kaushal Laheri, Roshani Panchal, Ritul Suthar, Jenish Soni

