

# DESIGN SOURCE

November - December 2018 | ₹100/-



**Benchmarking**  
the Quality of  
Lifestyle

**Walk the talk**  
Mr. Kunal Katyal  
Managing Director,  
Konig Group

**INSPIRING  
REALTIES**



# RESIDENCE FOR **STYLE AND OPULENCE**

Kheni's Residence was designed by ADDA Architects and Urban Designers. In this home, both contemporary art and modern furniture play crucial roles. Here traditional motifs and materials are creatively used to develop a luxurious space.



A private lift unfolds directly into the entrance foyer embellished with tints and tones of brown. Detailing with Italian marble flooring, solidwood and teak wood doors with symmetric patterns accentuates the in-environment of the place.

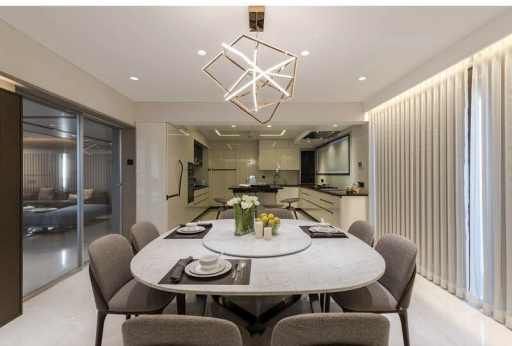
While walking inside the living room one can realise that here interiors define the space. White walls with depressed wooden ceiling illuminate the area with LED lights. A dove coloured à la mode carpet outspreads in the center with deluxe brown leather sofa on the periphery along with a blue sofa to break the monotony.

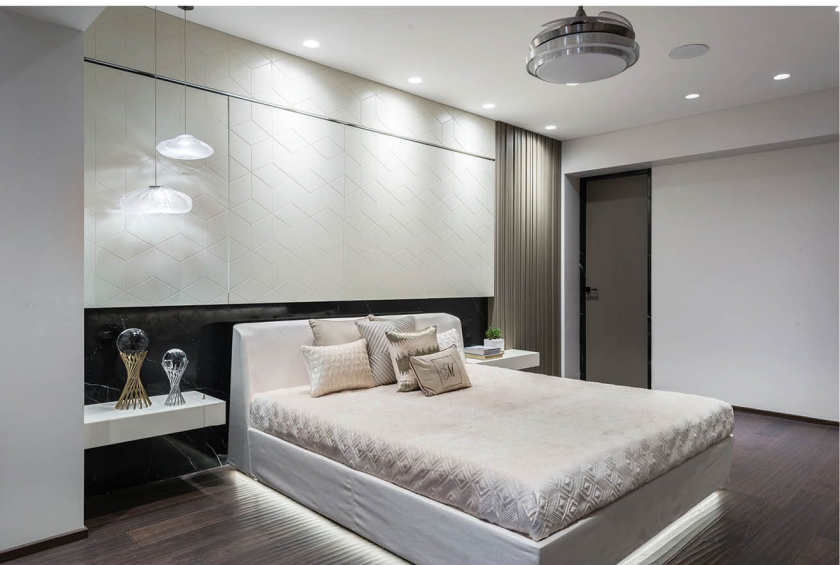
An oval shaped multilevel center table and side tables in similar fashion decorates the space. Hanging lights are suspended in the corner, giving ambient light and serene feel. The living room and family sitting room are prorated by a glass partition, giving the home a regal character.



#### FACT FILE

**Project Name:** Kheni's Residence  
**Location:** Ahmedabad, Gujarat  
**Typology:** Residential  
**Area:** 5,500 sq. ft.  
**Initiation:** April 2017  
**Completion:** February 2018  
**Design Team:** Mayank Paarekh, Dhaval Shah, Roshani Panchal, and Raj Modi  
**Text Credits:** Ar. Himani Ahuja  
**Photo Credits:** PHXINDIA





Both kitchen and dining space are presented in elaborate design. The open kitchen gives a spacious feel.

Suspended staircase faced with Italian marble takes one to the private zone. Keeping the theme of ivory colour constant, each bedroom of the home is designed with a unique interior colour scheme, allowing one to relish the interiors.

One of the bedrooms have décor inclusive of white Italian marble flooring with beige grains, complementing the plush beige upholstered double bed along with wooden paneling on one wall.

The attached walk-in closet is elegant separated by glass partition with the dressing.







Moving up to the 14th floor is the entertainment and relaxing zone, where an extensive group can hangout. The television is installed on the wall with the vertical storage space on either side.

created in niches. Here the walls are paneled with subtle grey, grooved in a geometric fashion; creating an exclusive pattern. Along with this is the assortment of fabrics on the furniture extended with a snooker table.

The terrace garden with exquisite peripheral potted plants, adds serenity to the all round opulence. A snug residing on one side of the terrace is designed with wooden tile flooring and is camouflaged with a pergola on top. A pebble filled delineating line is defined for seating arrangement; outdoor wicker furniture is used to complete the ensemble. ●



Architects - Mayank Paarekh, Dhaval Shah  
And Kaushal Laheri - Co-Founders of ADDA  
Architects and Urban Designers



## ADDA Architects and Urban Designers

ADDA Architects and Urban Designers is a team of individuals with distinct ideologies coming together. Their strength lies in the ability to conceive master planning, architecture, interior and landscape design with strong conceptual unity and clarity.

Mayank Paarekh, Kaushal Laheri and Dhaval Shah, ADDA founders and college friends, were just like any other architects with big dreams and aspirations to work together using their experience of architectural training at different firms. Established in 2011, the team of three started doing projects with limited opportunities at hand, gradually growing into a larger team structure.

Developing innovative design solutions that are contextual, creating spaces that focus on the experiential value and experimenting with material aspects of a project while still contributing to sustainability, form the firm's design philosophy.

Showcasing creative freedom in small scale interior projects, pushing forward to large scale spaces, they have always been very selective in their clientele and design outreach. Having a niche in innovative space design with years of delivering luxurious and high-end projects, team ADDA aspires to work on much larger projects pan India, focusing their design style inclining on a vision more towards green buildings.

Some of the eminent projects by team ADDA includes ADDA Office, their own design studio in Surat, that reflects their personal style of how an office space should look like; Farmville, a farmhouse reconstructed in Surat, using the design and elements in a way that it connects the space to the nature; Oriana Façade, an Office Space in Surat created with workspace as an open display of organization's professional ethos; and a luxury 3 storey residence for their client Mr. Kheni, in Ahmedabad.