

HOME & DESIGN

A TIMES OF INDIA PUBLICATION

TRENDS

VOLUME 6 NO 7 ₹250



ABIN CHAUDHURI
ALAN ABRAHAM
BADRINATH KALERU
OJAS CHAUDHARI
PRERNA KALERU
RAHUL DAS MENON
RAHUL SHANKHWALKER
AND MORE...

Tarik Currimbhoy

*on making
sculptural moves*

ARCHITECTURE

RESIDENTIAL

Homes that craft a contemporary identity through their design

PROJECT: FARMHOUSE ▼ ARCHITECTS: ADDA ARCHITECTS AND URBAN DESIGNERS

TEXT: SWARUPA TRIPATHY

IMAGES: PHOTOGRAPHIX INDIA | SEBASTIAN + IRA



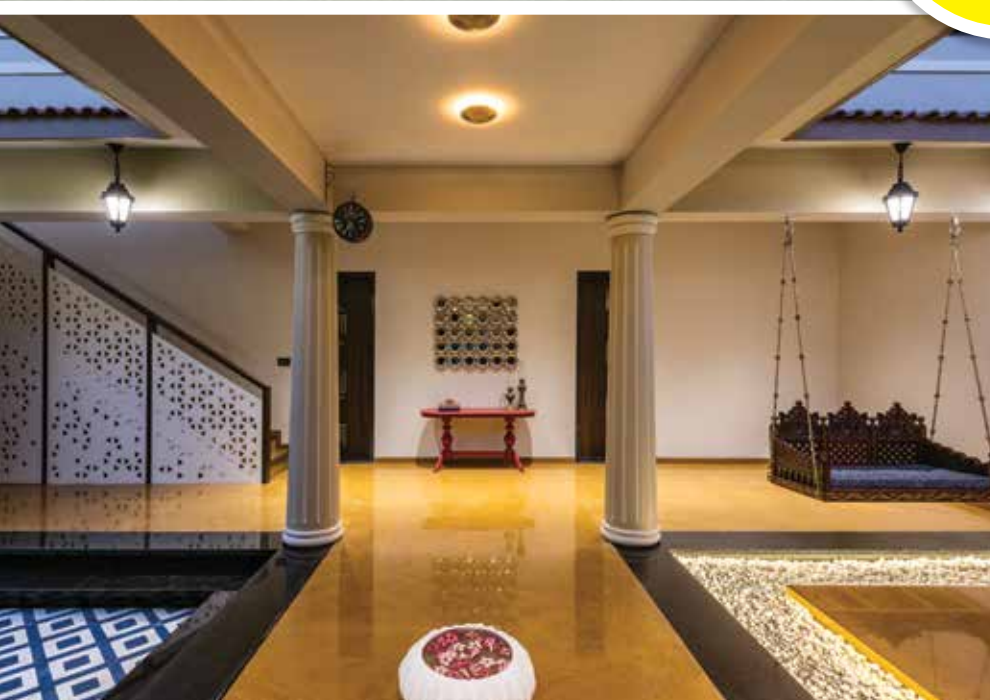
Additional Info

- AREA: 5,450 SQFT
- LOCATION: SURAT

Designed for three residing generations, this multi-storeyed family home in Surat binds traditional and modern elements in a calm, handcrafted space.



FYI
Elements like a marble bowl, traditional swing, wall plates and a canoe accentuate the foyer.



When walking through the various spaces of this luxurious farmhouse in Surat, one is introduced to a built representation of the different generations that have inhabited this site at different points in time. Designed by Mayank Paarekh, Dhaval Shah and Kaushal Laheri with their design team at ADDA Architects, the farmhouse holds a cultural significance for the younger generation to learn and carry forward. Designed as an ode to the previous generations who lived in the space, it is a blend of contemporary and traditional designs.

The house is anchored by distinct courtyards reminiscent of traditional Indian homes, with a touch of modernity. These courtyards have different

designs — one is the '*tulsi angan*' with a handpainted 'tree of life' on the wall and a swing to enjoy sunny mornings, and the other performs the job of bringing the outdoors in, with a vertical garden that extends into the backyard.

The two courtyards sit primly on either side of a central entry pathway, accessed by a wooden main door with brass inlays. It's this space that forms the family's personal zone, which connects them to their ancestral home. It also houses a staircase that leads to the first floor.

A soothing colour palette envelops the home, seen in the hues on the walls, the flooring, upholstery and furniture. A wooden gabled ceiling and Kota stone floor in the elongated living and dining room creates a perfect balance.

“
We decided to create an experiential house rather than a mere home composition, with the use of modern materials and geometric triangular shapes in a diverse way, to symbolise strong cultural roots.
— Mayank Paarekh, Co-founder and Principal Architect, ADDA Architects





The bedrooms echo the palette, with furniture that highlights with the use of intricate designs, classic side tables, canopies and ivory furniture. Small reading corners and attached washrooms provide extra privacy to the residents.

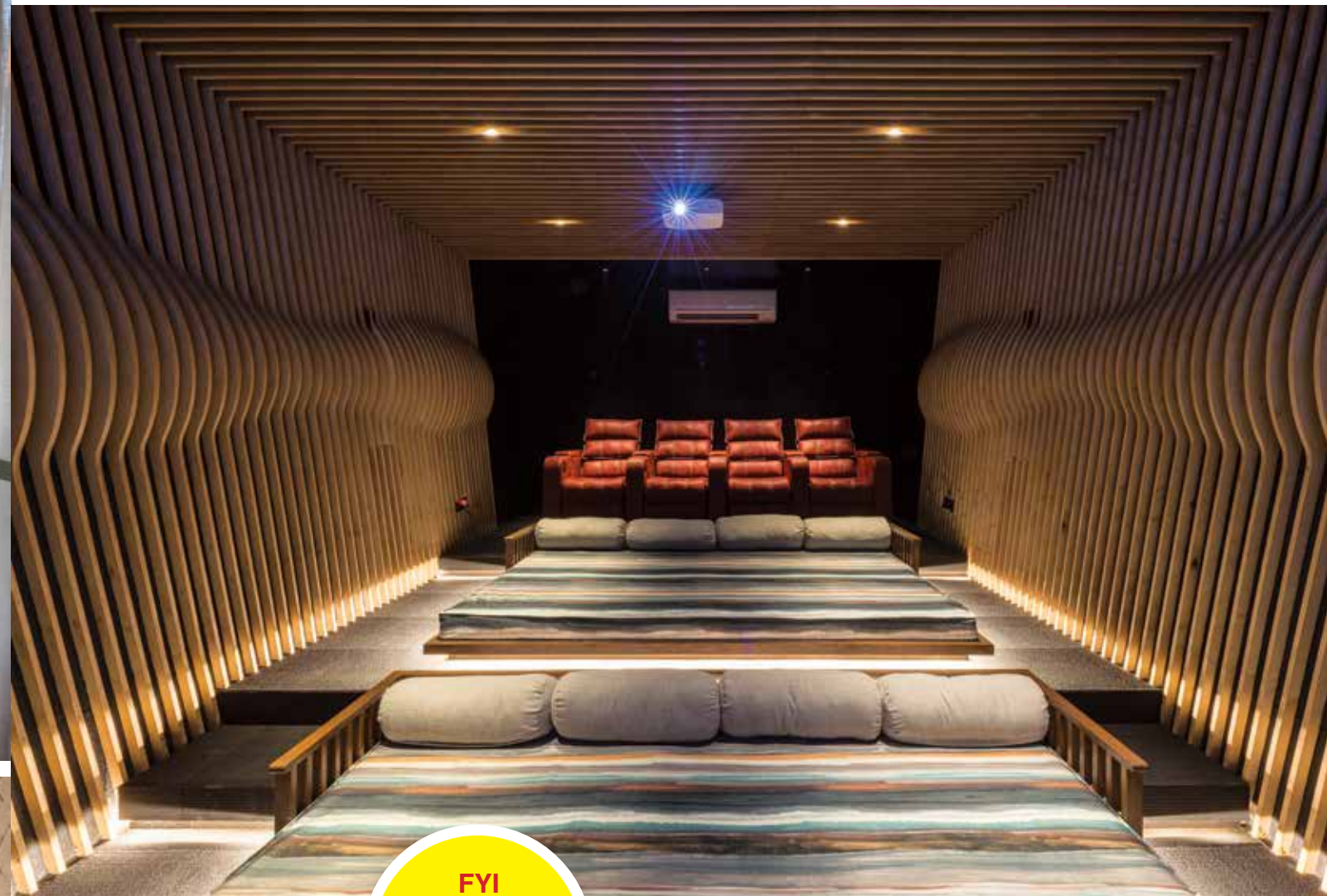
The home theatre has the most striking design concept in the house. To create a one-of-a-kind experience, the architects broke away from the traditional design of the farmhouse and added wall claddings with the help of wooden panels. These act as sound absorbers and are continued onto the ceilings as well, giving the viewers a truly cinematic experience, along with recliners and beds for them to sit back and relax.

Traditional elements like hand painted walls, brass doors, majestic columns and Indian stone mingle well with marble and wooden flooring, to create a contemporary home with a hint of nostalgia for its residents.



“The living room extends in a linear fashion, with a similarly elongated dining and open kitchen area attached to it, in a minimal and cosy setting.

— Dhaval Shah, Co-founder and Principal Architect, ADDA Architects



FYI

The home theatre room has been designed around the concept of a human rib cage.

THE SPECS

Design team: Mayank Paarekh, Dhaval Shah, Kaushal Laheri, Roshani Panchal, Ritul Suthar, Raj Modi
 Builder: Vaishnodevi Group
 Kitchen manufacturer: Maruti Hardware
 Kitchen appliances: Hafele
 Windows: Oriana Facade
 Flooring: Bharat Flooring, Platina Stone, Nitco
 Paints: Dulux
 Lighting: Ekya Ventures, K-Lite
 Heating: Mitsubishi
 Furniture: Archwood Interiors
 Bath fittings: Kohler
 Ventilation: Havells
 Bed linen: Maspar
 Mirrors: Saint Gobain
 Artwork: Rogan Designs, Kalakaarihaath
 Decor objects: Bhandari Exports
 Landscaping: Greenwall

